



# VOYAGE D'UN HARPISTE EN ORIENT.

Recueil

D'AIRS ET DE MELODIES POPULAIRES

en Turquie et en Asie mineure

confiés

à l'Instrument de la Poésie

## LA HARPE

et dédiés

A MADAME LA PRINCESSE MOROUSI

de Constantinople

par

## E. PARISH ALVARS

dont toutes ces mélodies ont été exécutées devant le Sultan et dans les soirées de l'Ambassadeur de Russie le Comte de Boutinoff à Bujukdéré.

Propriété des Editeurs.



Enregistré dans l'Archive de l'Union.

Ouvrage 62  
N° 2

Vienne

chez Pietro Mechetti q<sup>m</sup> Carlo

Prix  
30 kr. A. de C.

Marchand Editeur de Musique et de beaux Arts de Cour J. et R.

Milan chez Giov. Ricordi. Londres chez Cramer, Addison et Beale.



# SOUVENIR DU BOSPHORE.

Chant des jeunes filles grecques à Bujukdéré.

MOTTO.

I enter thy garden of roses,  
Beloved and fair Haidée,  
Each morning where Flora reposes,  
For surely I see her in thee.  
Oh, Lovely! thus low I implore thee,  
Receive this fond truth from my tongue  
Which utters its song to adore thee,  
Yet trembles for what it has sung.

BYRON.

Oeuvre 62.

N° 1.

*Andantino.*

*staccato.*

*p si accorda lo stromento. mf f*



*p*

*ritornello.*

*legato. canto.*

*p*



*mf*



*cresc.*

*p*





1 3 4

cre = scen = = do

A handwritten musical score for the song "The Rose Tree". The score is written on two staves, Treble and Bass clef, in G major (one sharp) and 2/4 time. The melody is in the Treble staff, and the accompaniment is in the Bass staff. The piece consists of six measures. The first measure starts with a piano (p) dynamic. The second measure has a handwritten "3" above the bass line. The third measure has a handwritten "3" above the bass line. The fourth measure has a handwritten "3" above the bass line and a "cresc:" marking. The fifth measure has a handwritten "3" above the bass line. The sixth measure has a handwritten "3" above the bass line. The score is written on aged, slightly yellowed paper.

Handwritten musical score for "L'Allegretto" by Beethoven, Op. 26, No. 2. The score is on aged, yellowed paper and features a grand staff with treble and bass clefs. The music is in 3/4 time. The first measure is marked "1" and has a handwritten "3 2 3 2 1 3" below it. The second measure is marked "dimin:" and has a handwritten "3 4 3" below it. The third measure is marked "ritard: 2" and has a handwritten "8" below it. The fourth measure is marked "a tempo." and has a handwritten "7" below it. The fifth measure is marked "ritornello." and has a handwritten "3" below it. The sixth measure is marked "3" and has a handwritten "3" below it. The score is written in a cursive, handwritten style.

A handwritten musical score on aged paper. The title "Canto." is written at the top center. The score is written on two staves, treble and bass clef, with a key signature of one flat (B-flat). The melody is written in the treble staff, and the bass line is in the bass staff. The music consists of several measures, with some notes beamed together. There are some handwritten annotations: "re do" in the second measure and "p" (piano) in the third measure. The paper shows signs of age, including discoloration and some staining.

Handwritten musical score for 'Lied der Nachtigall' by Franz Schubert, measures 1-7. The score is written on two staves: a treble staff (top) and a bass staff (bottom). The key signature is one flat (B-flat), and the time signature is 4/4. The melody in the treble staff begins with a half note G4, followed by a quarter note A4, and then a half note B-flat4. The bass staff features a continuous eighth-note accompaniment pattern. The dynamic marking 'mf' (mezzo-forte) is present in measure 4. The notation is in ink on aged paper.



Handwritten numbers: 2, 1, 2, 1

*marcato.* *f* *sosten:* *mf*

Handwritten numbers: 2, 2, 1, 4, 3, 1, 1, 2, 4

*marcato.* *cresc:* (eb) *ritard:*

Handwritten numbers: 3, 4, 3, 1, 2

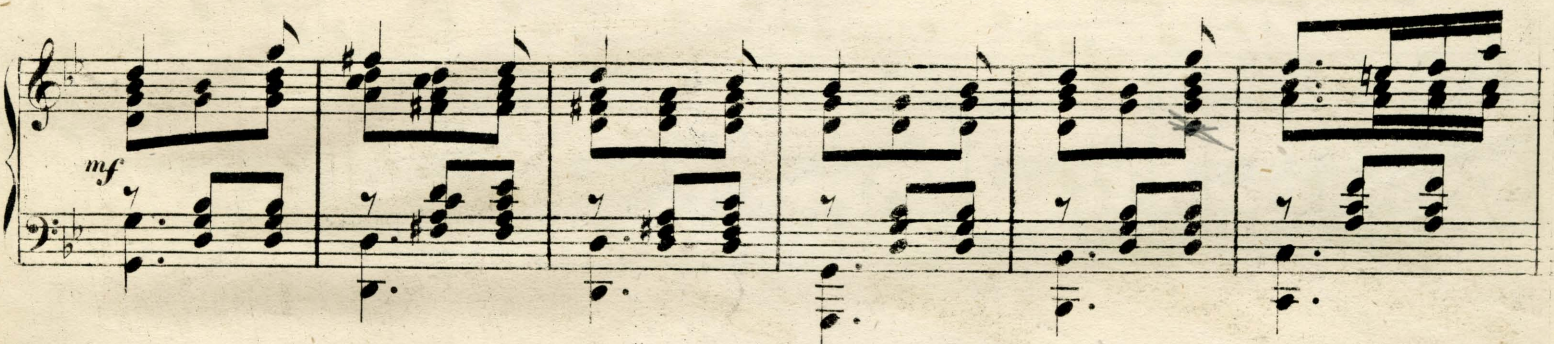
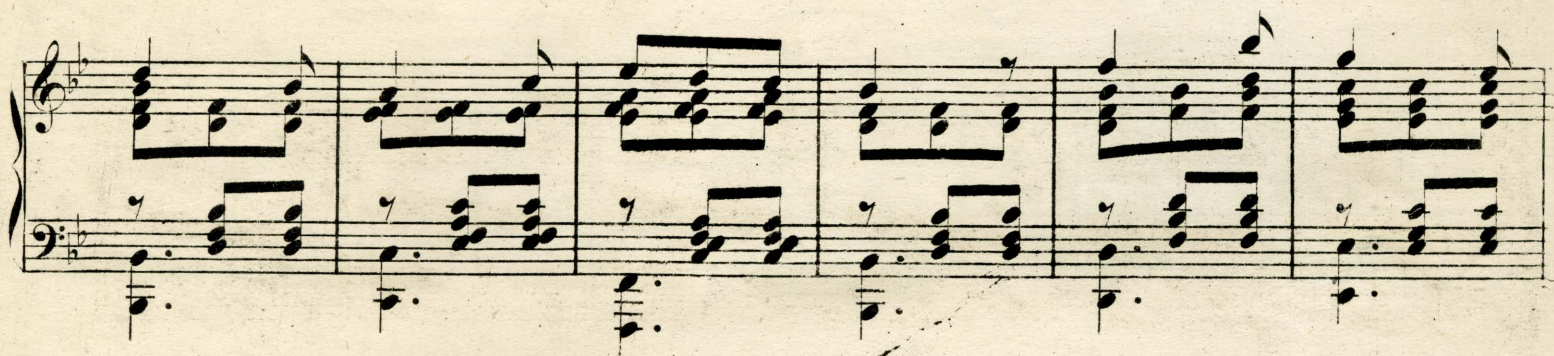
*stretto* *p* *cresc:*

*f*

*dimin:* *ritard:* *a tempo.* *ritornello.* *p*



*ben marcato il canto.*





*ritard:* *a tempo.* *sosten:*

*tranquillo.* (*g#*) (*f#*)

(*g#*) (*f#*)

*cre* = = = *scen* = = = *do* *f* *fz*

*ri* = = = *tar* = = = *dan* = = = *do.* *dimin:* *p* *pp*